

**FRONT ELEVATION**



**REAR ELEVATION**

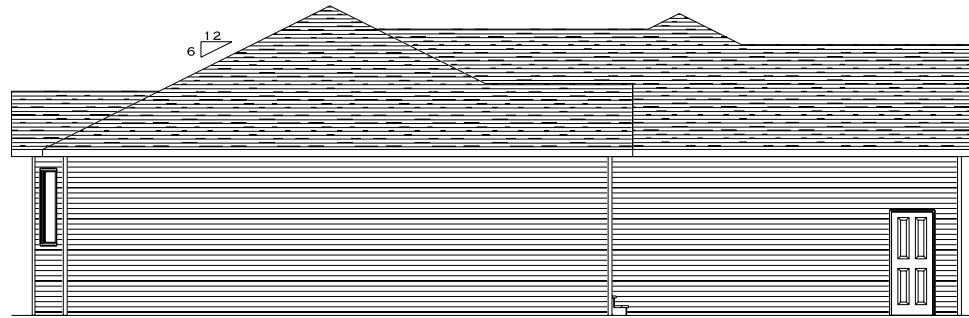


**FRONT STREET MILLWORK & LUMBER, INC.**  
 1416 EAST FRONT AVENUE - BISMARCK, ND 58504  
 PHONE: 701.223.4500  
 MARCIE@FRONTSTREETMILLWORK.COM

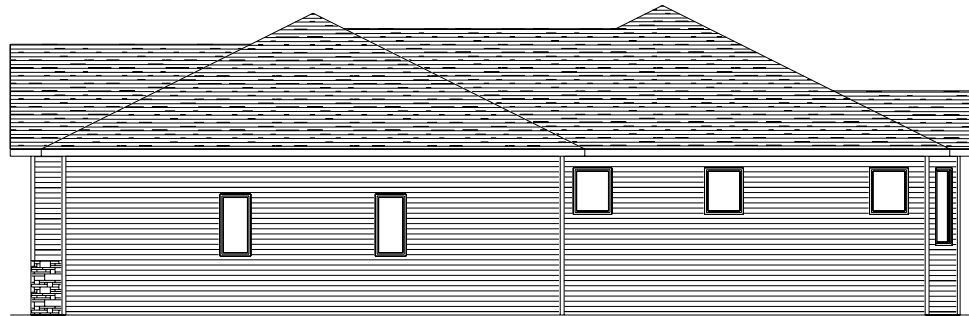
**BOULDER HOMES**  
 BDR-CALVERT-STANDARD\_GR

**MARCIE FRANKLUND**  
 SALE: FEBRUARY 10, 2016  
 WEDNESDAY, FEBRUARY 10, 2016

**SCALE**  
 0.081" = 1'-0"



**LEFT ELEVATION**



**RIGHT ELEVATION**



**FRONT STREET MILLWORK & LUMBER, INC.**  
 1416 EAST FRONT AVENUE - BISMARCK, ND 58504  
 PHONE: 701.400.5554  
 FAX: 701.400.5500  
 MARCI@FRONTSTREETMILLWORK.COM

**BOULDER HOMES**  
 BDR-CALVERT-STANDARD\_GR

**MARCIE FRANKLUND**  
 FEBRUARY 10, 2016  
 WEDNESDAY, FEBRUARY 10, 2016

**0.081" = 1'-0"**



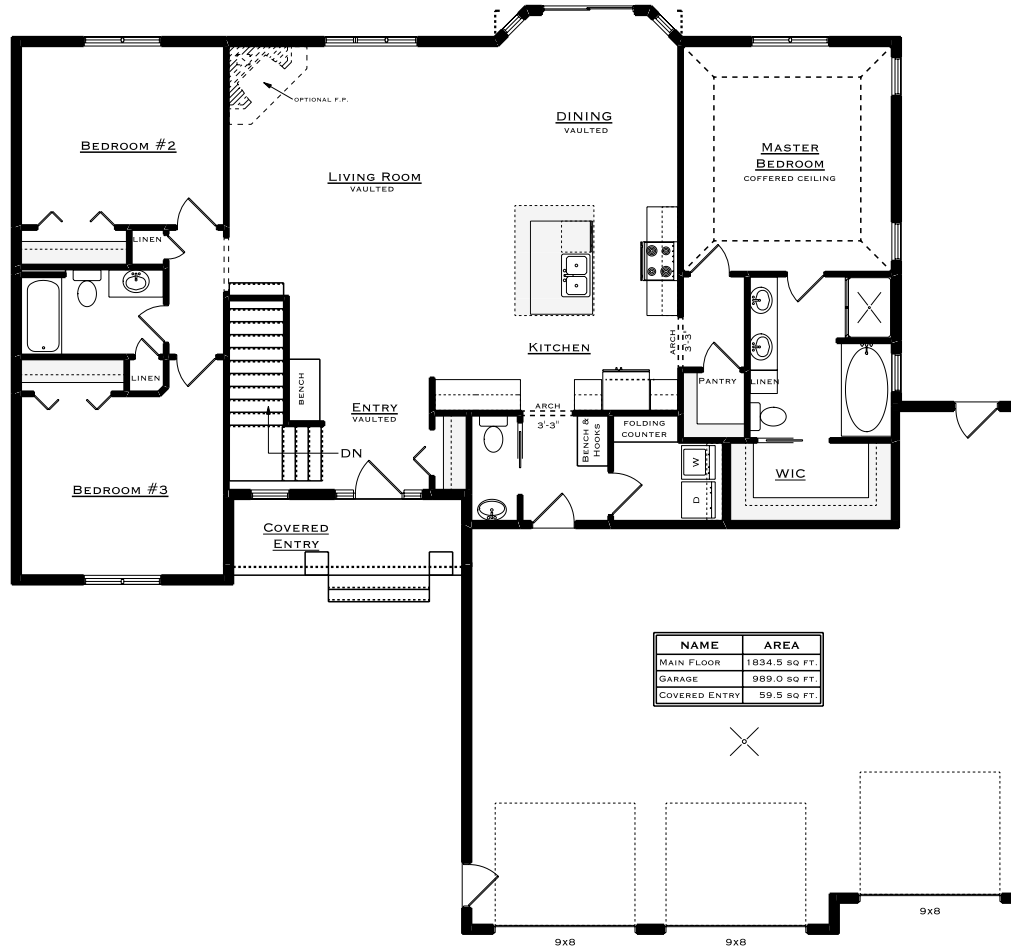
**FRONT STREET MILLWORK & LUMBER, INC.**  
 1416 EAST FRONT AVENUE - BISMARCK, ND 58504  
 PHONE: 701.223.7600  
 MARCIE@FRONTSTREETMILLWORK.COM

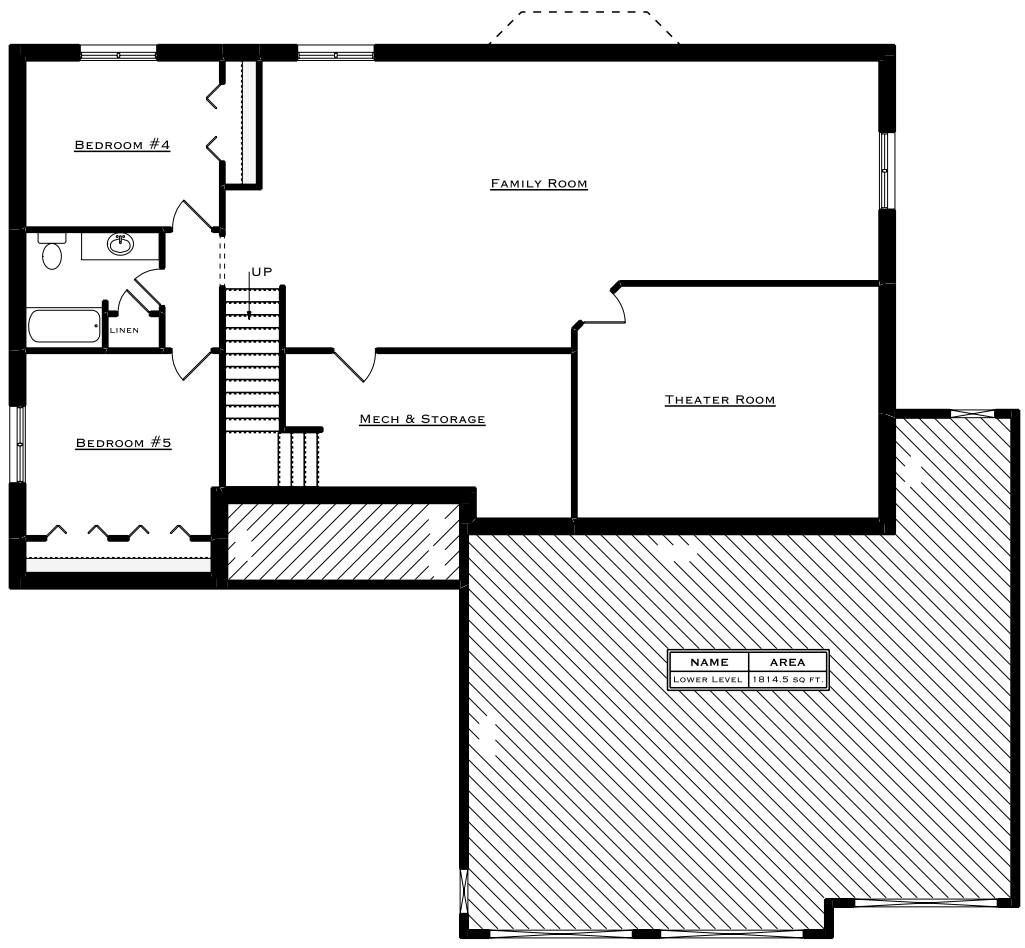
**BOULDER HOMES**  
 BDR-CALVERT-STANDARD\_GR

MARCIE FRANKLUND  
 FEBRUARY 10, 2016  
 WEDNESDAY, FEBRUARY 10, 2016

0.081" = 1'-0"

NOTE:  
 9' MAIN FLOOR WALLS





**FRONT STREET MILLWORK & LUMBER, INC.**  
 1416 EAST FRONT AVENUE - BISMARCK, ND 58504  
 PHONE: 701.223.4500  
 MARCIE@FRONTSTREETMILLWORK.COM

**BOULDER HOMES**  
 BDR-CALVERT-STANDARD-GR

MARCIE FRANKLUND  
 FEBRUARY 10, 2016  
 BDR-CALVERT-STANDARD-GR  
 WEDNESDAY, FEBRUARY 10, 2016

0.081" = 1'-0"

